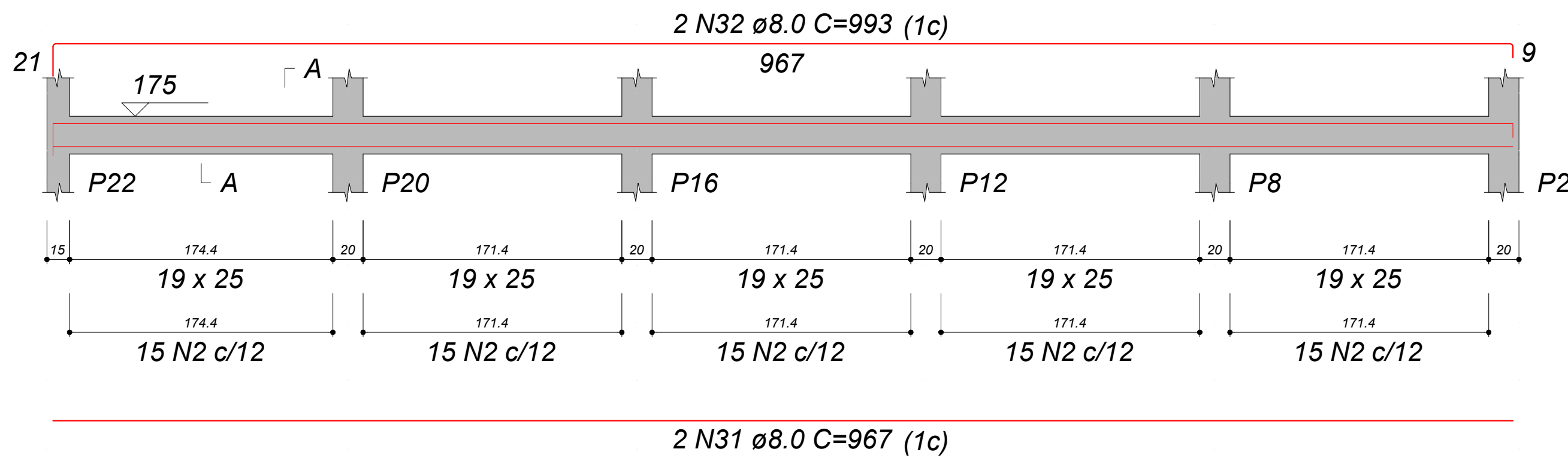
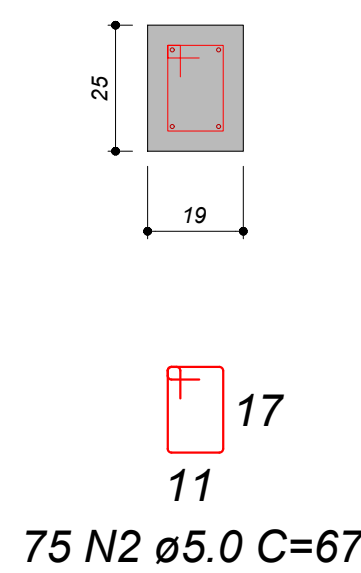


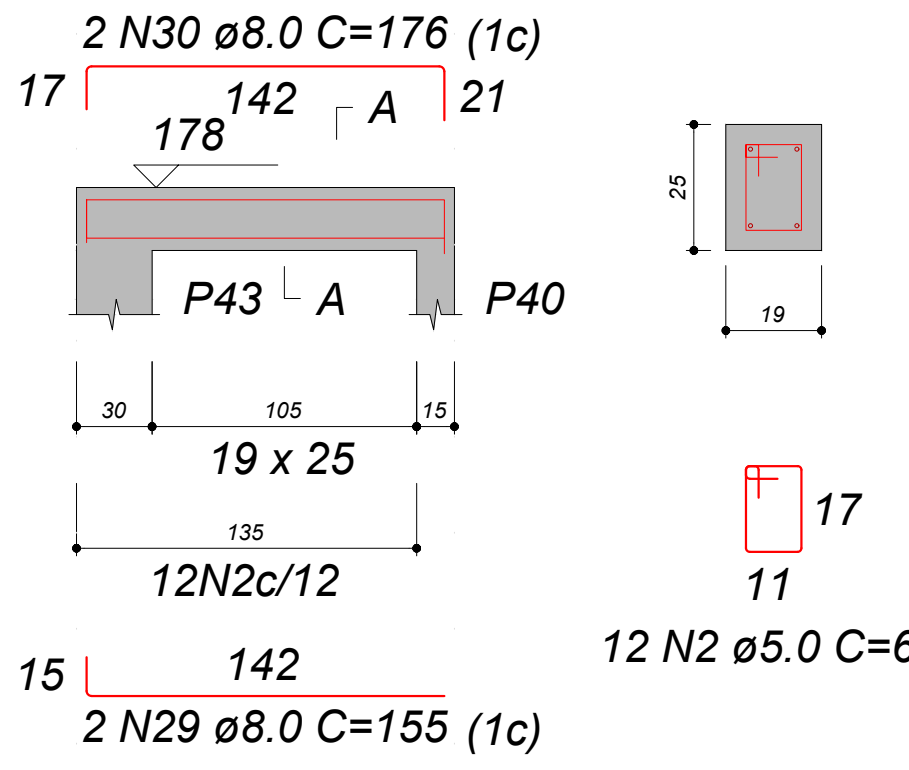
VB306
ESC 1:30



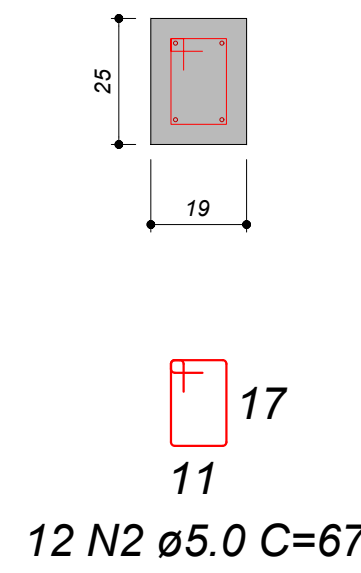
SEÇÃO A-A
ESC 1:15



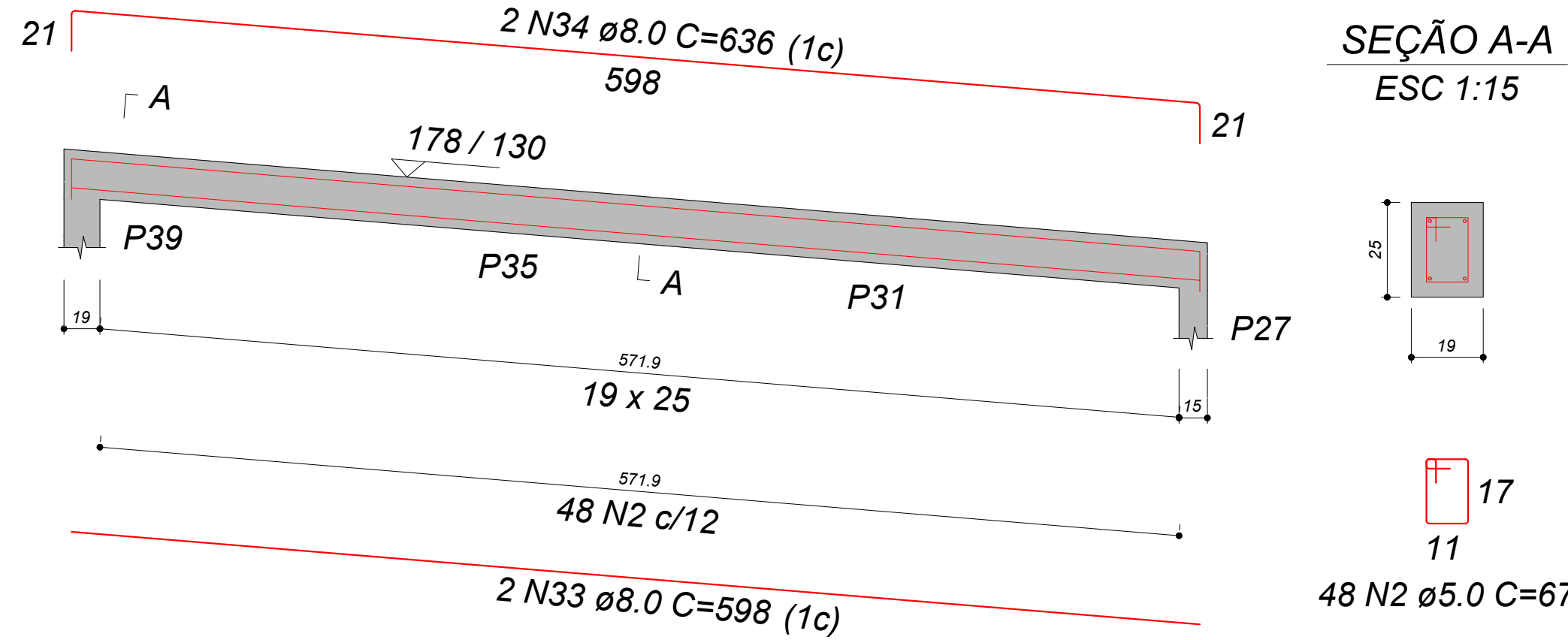
VB307
ESC 1:30



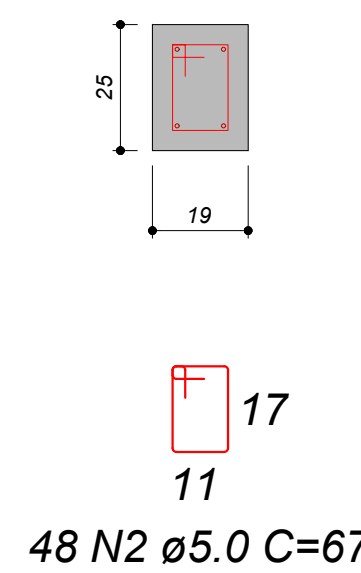
SEÇÃO A-A
ESC 1:15



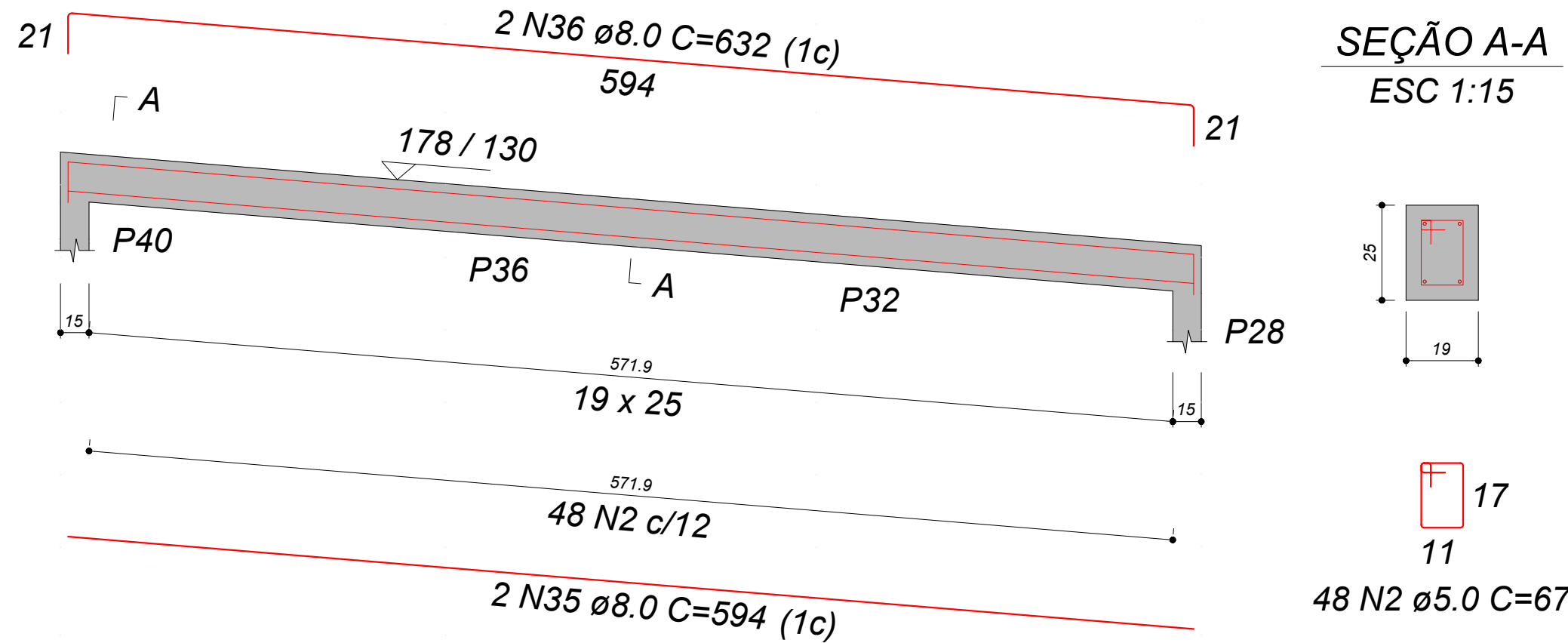
VB308
ESC 1:30



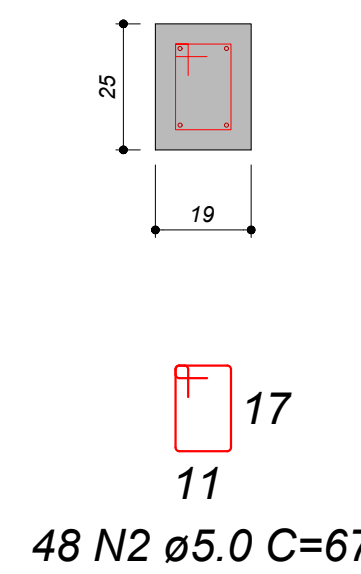
SEÇÃO A-A
ESC 1:15



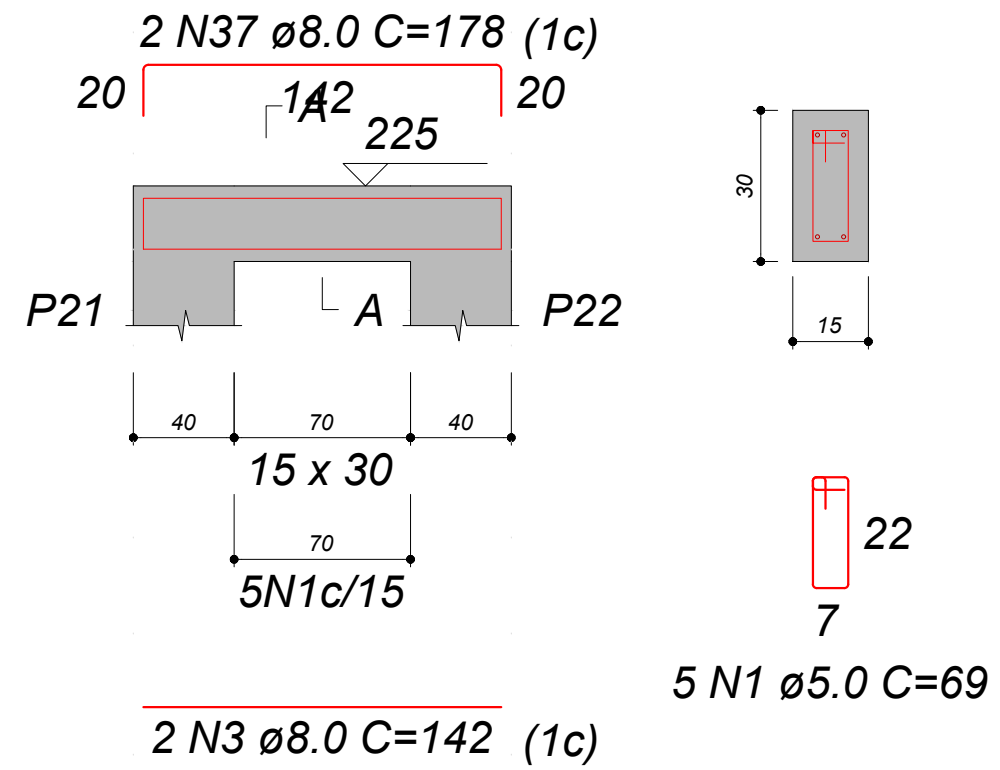
VB309
ESC 1:30



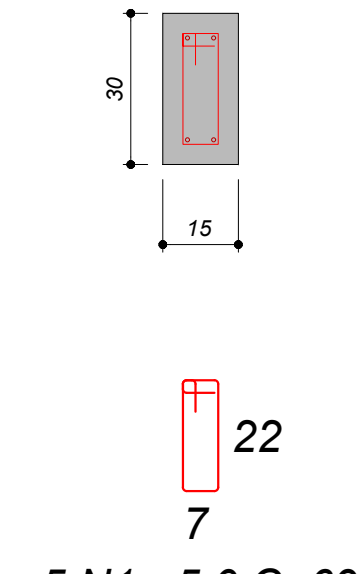
SEÇÃO A-A
ESC 1:15



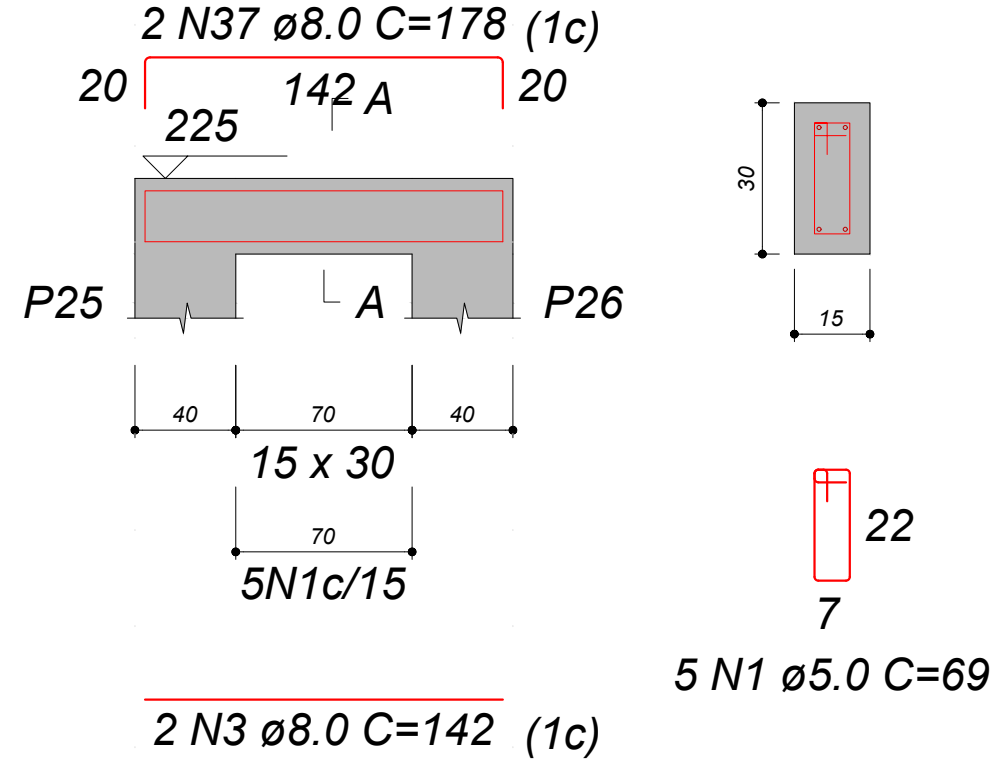
VB401
ESC 1:30



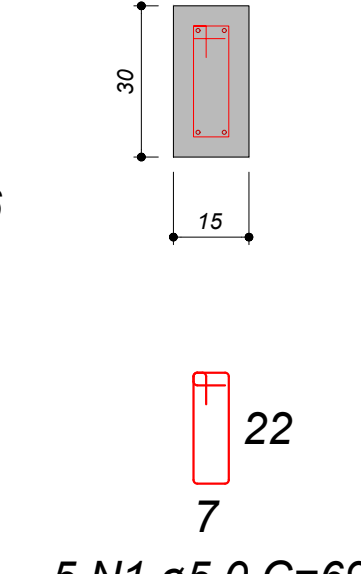
SEÇÃO A-A
ESC 1:15



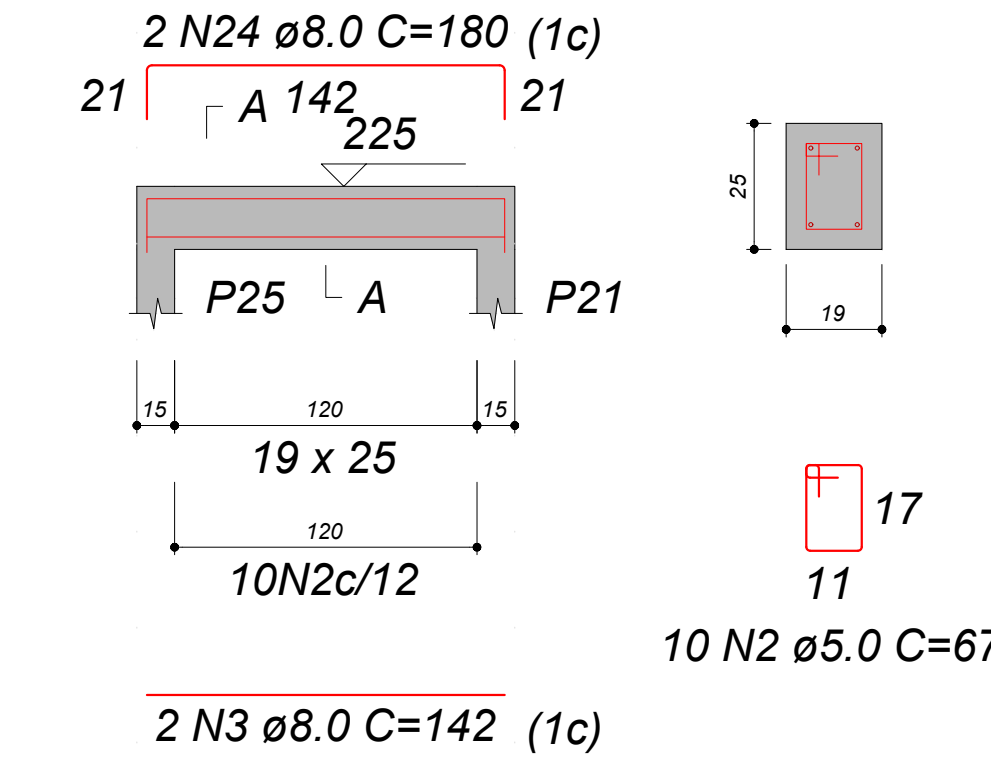
VB402
ESC 1:30



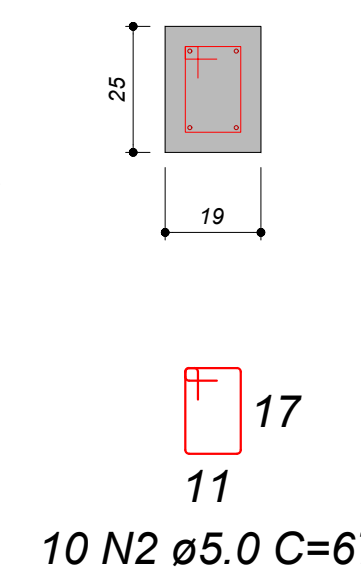
SEÇÃO A-A
ESC 1:15



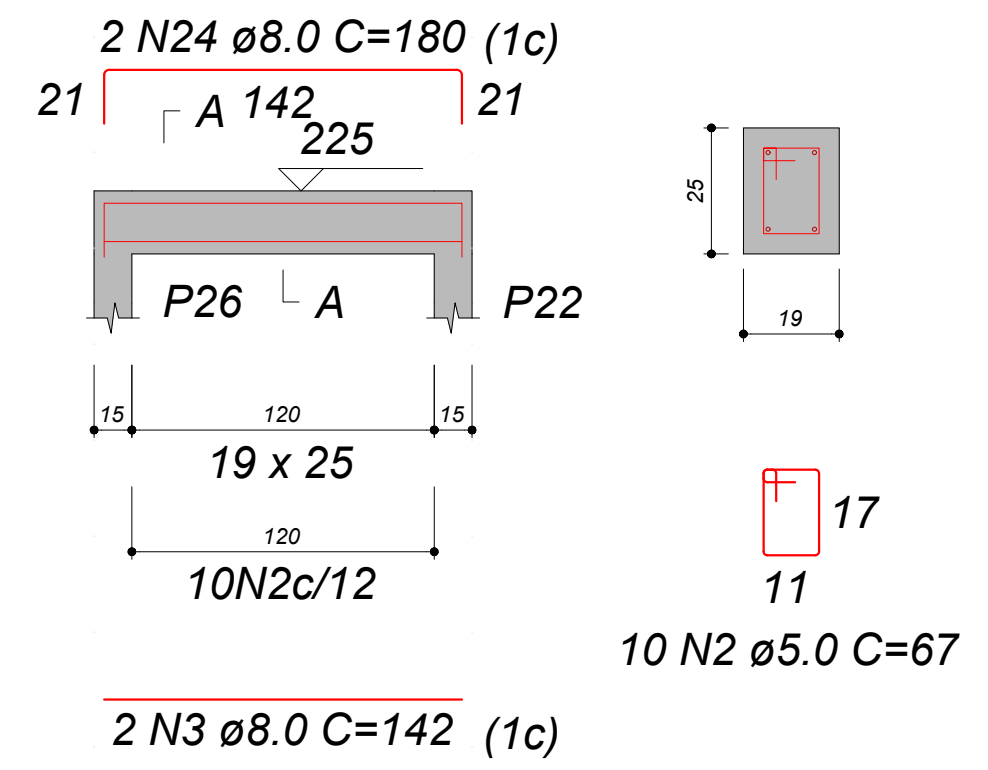
VB403
ESC 1:30



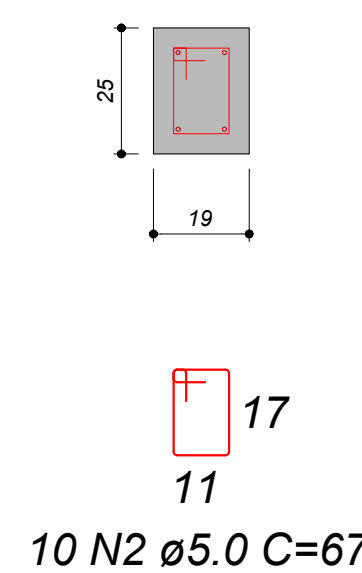
SEÇÃO A-A
ESC 1:15



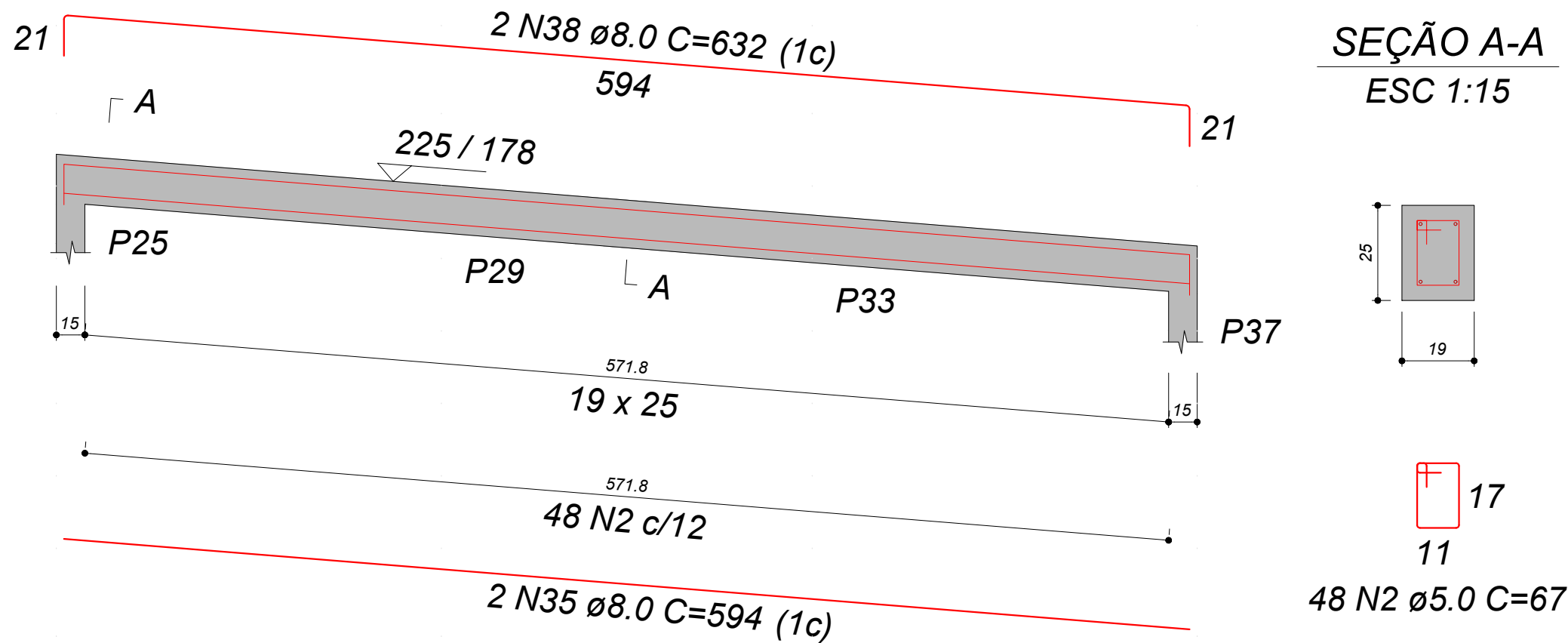
VB404
ESC 1:30



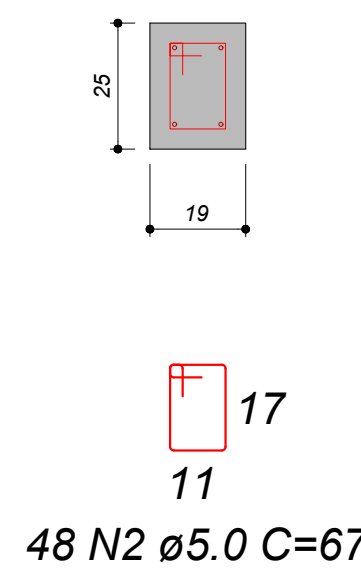
SEÇÃO A-A
ESC 1:15



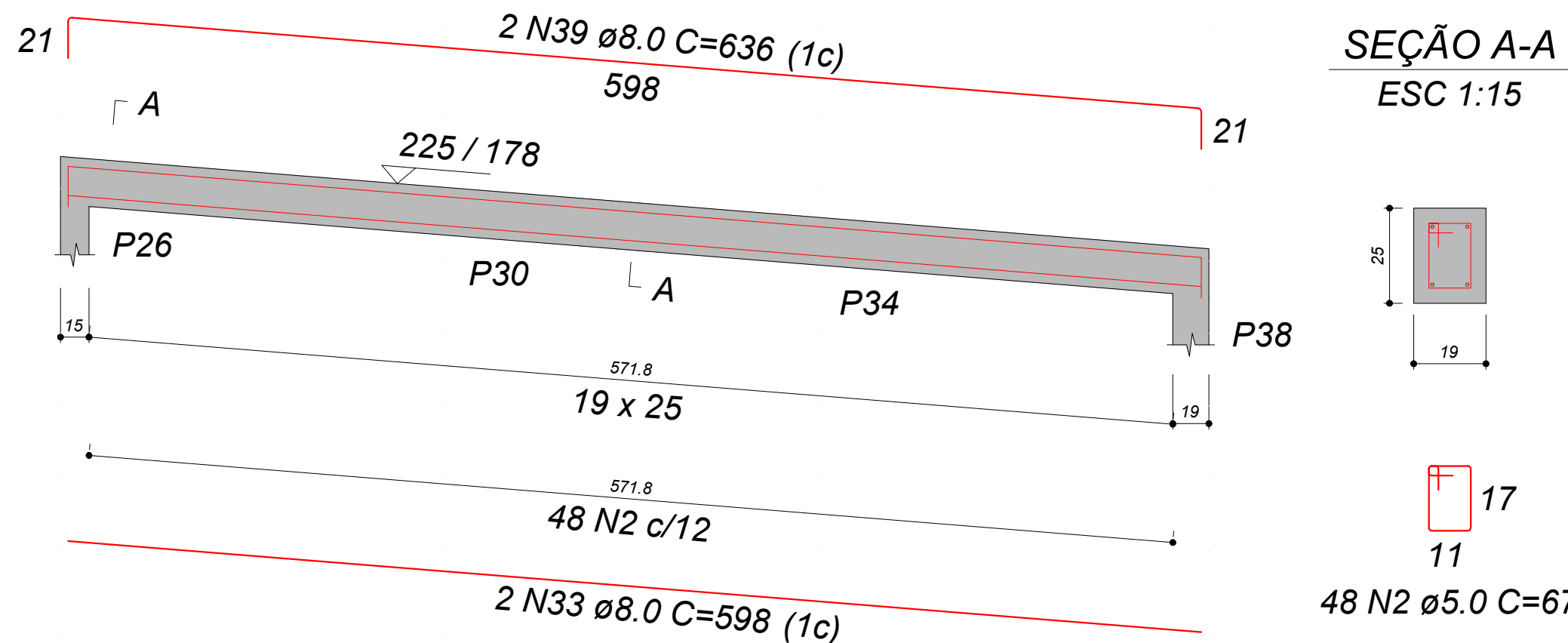
VB405
ESC 1:30



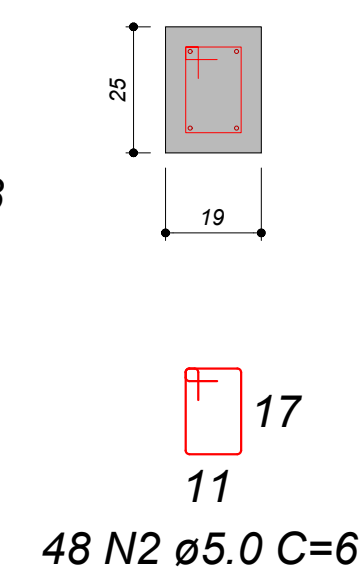
SEÇÃO A-A
ESC 1:15



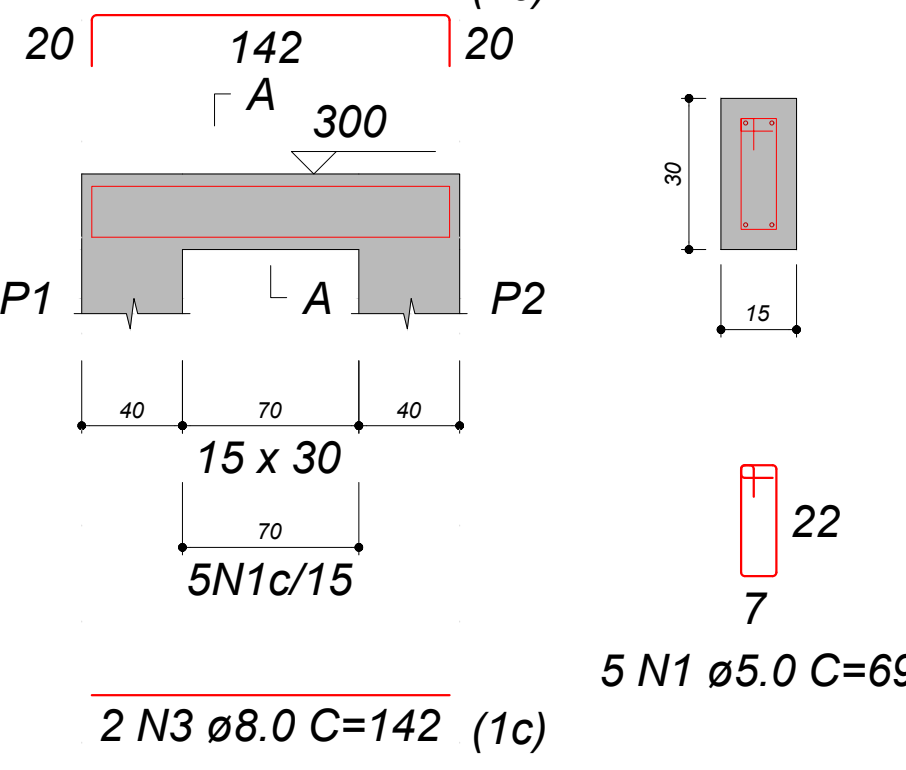
VB406
ESC 1:30



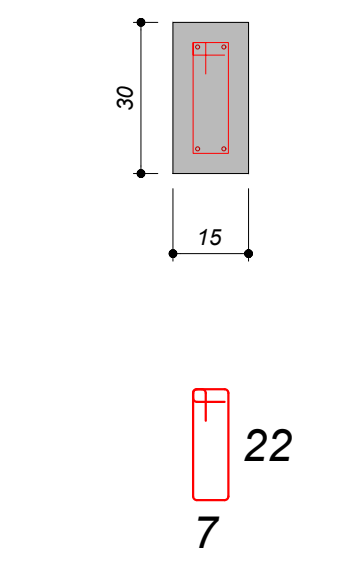
SEÇÃO A-A
ESC 1:15



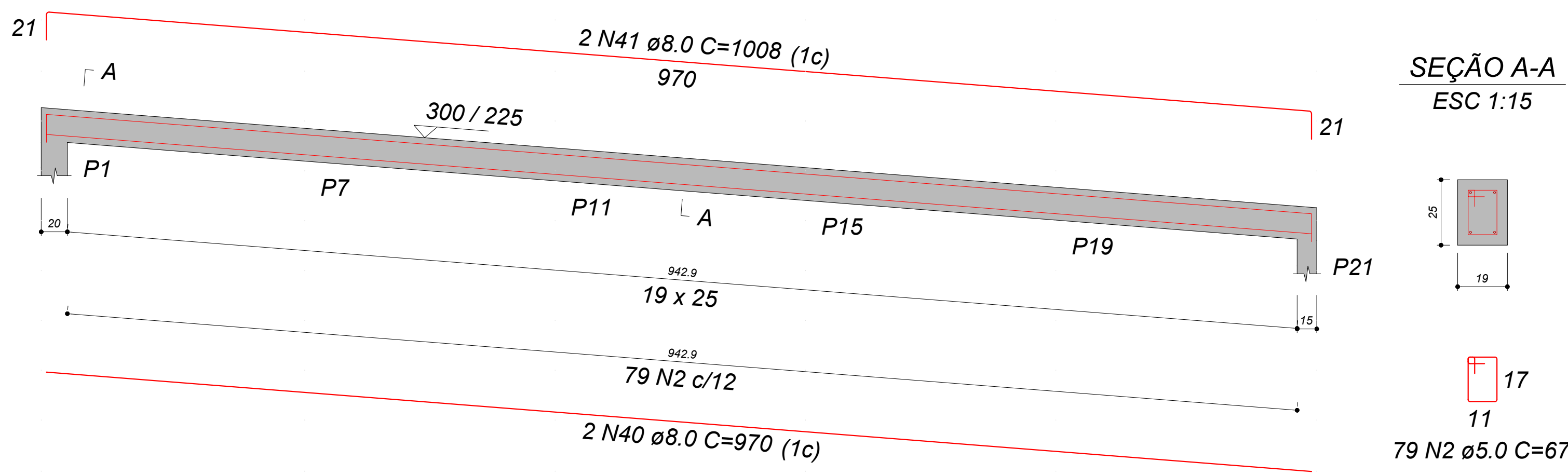
VB501
ESC 1:30



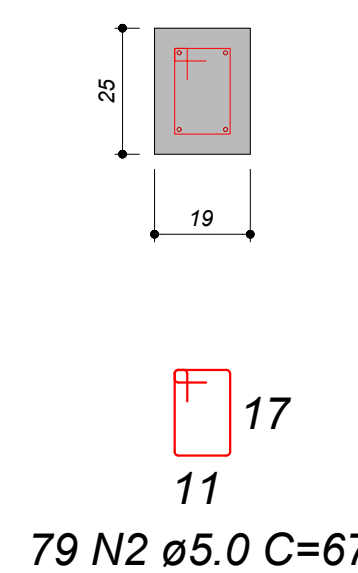
SEÇÃO A-A
ESC 1:15



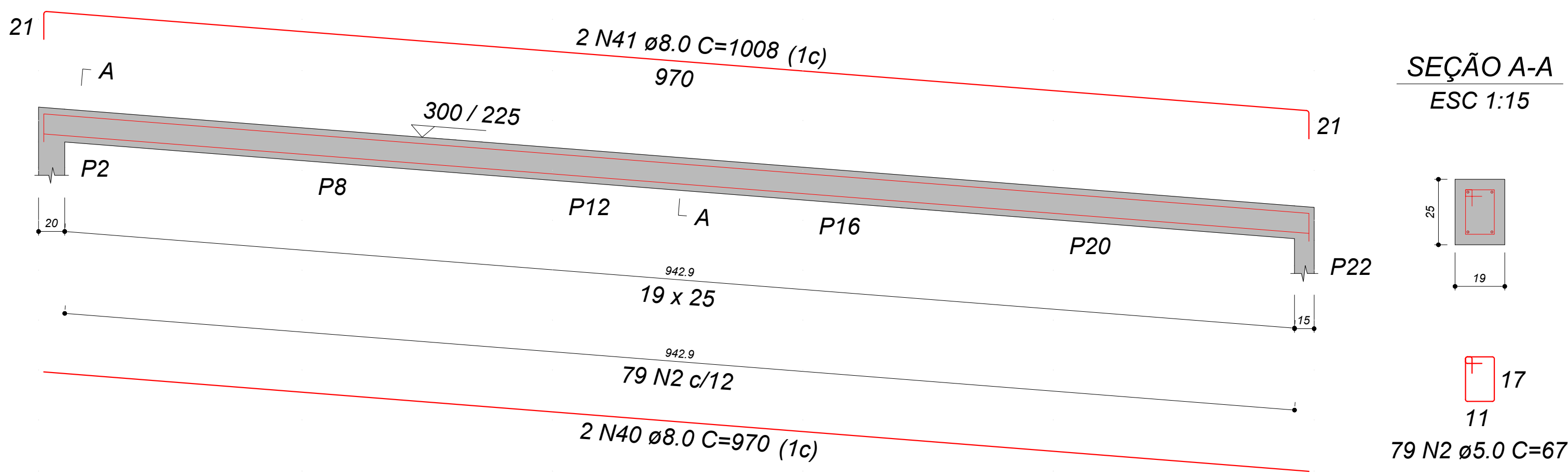
VB502
ESC 1:30



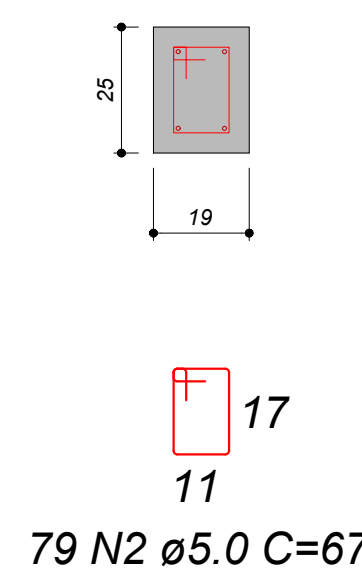
SEÇÃO A-A
ESC 1:15



VB503
ESC 1:30



SEÇÃO A-A
ESC 1:15



RELAÇÃO DO AÇO

VB101-L1	VB102-L1	VB103-L1
VB104-L1	VB105-L1	VB106-L1
VB107-L1	VB108-L1	VB109-L1
VB110-L1	VB111-L1	VB112-L1
VB113-L1	VB114-L1	VB115-L1
VB116-L1	VB201-L3	VB202-L3
VB203-L3	VB204-L3	VB205-L3
VB206-L3	VB301-L4	VB302-L4
VB303-L4	VB304-L4	VB305-L4
VB306-L4	VB307-L4	VB308-L4
VB309-L4	VB401-L5	VB402-L5
VB403-L5	VB404-L5	VB405-L5
VB406-L5	VB501-L6	VB502-L6
VB503-L6		

AÇO	N	DIAM (mm)	QUANT	C.UNIT (cm)	C.TOTAL (cm)
CA60	1	5.0	60	69	4140
CA50	2	5.0	1466	67	98222
	3	8.0	58	142	8236
	4	8.0	6	242	1452
	5	8.0	6	482	2892
	6	8.0	2	1061	2122
	7	8.0	2	770	1540
	8	8.0	4	1200	4800
	9	8.0	2	672	1344
	10	8.0	2	1109	2218
	11	8.0	2	578	1156
	12	8.0	4	1198	4792
	13	8.0	2	550	1100
	14	8.0	2	1141	2282
	15	8.0	2	565	1130
	16	8.0	2	558	1116
	17	8.0	2	1078	2156
	18	8.0	2	623	1246
	19	8.0	2	549	1098
	20	8.0	2	740	1480
	21	8.0	2	761	1522
	22	8.0	2	744	1488
	23	8.0	2	753	1506
	24	8.0	8	180	1440
	25	8.0	4	835	3340
	26	8.0	4	873	3492
	27	8.0	2	280	560
	28	8.0	2	520	1040
	29	8.0	4	155	620
	30	8.0	4	176	704
	31	8.0	4	967	3868
	32	8.0	4	993	3972
	33	8.0	4	598	2392
	34	8.0	2	636	1272
	35	8.0	4	594	2376
	36	8.0	2	632	1264
	37	8.0	6	178	1068
	38	8.0	2	632	1264
	39	8.0	2	636	1272
	40	8.0	4	970	3880
	41	8.0	4	1008	4032

RESUMO DO AÇO

AÇO	DIAM (mm)	C.TOTAL (m)	PESO + 0% (kg)
CA50	8.0	845.3	333.5
CA60	5.0	1023.6	157.8
PESO TOTAL (kg)			
CA50		333.5	
CA60		157.8	

Volume de concreto (C-25) = 9.87 m³
Área de forma = 103.89 m²

DETALHAMENTO DAS VIGAS
ESCALA INDICADA



ESTADO DE GOIÁS
SECRETARIA DE ESTADO DA EDUCAÇÃO
SUPERINTENDÊNCIA DE INFRAESTRUTURA
GERÊNCIA DE PROJETOS E INFRAESTRUTURA

GERÊNCIA DE PROJETOS E INFRAESTRUTURA
APROVADO
EDMILSON PEREIRA SILVA

CE PROF. JOAQUIM FRANCISCO SANTIAGO

RAMPA DE ACESSO PRINCIPAL

ENDEREÇO					
AV. CONTORNO, JARDIM IPANEMA, NIQUELÂNDIA. CEP 76420000					
ÁREA DO TERRENO	ÁREA EXISTENTE	ÁREA DE REFORMA	ÁREA A CONSTRUIR	ÁREA TOTAL A CONSTRUIR	ÁREA TOTAL
VER PROJ. ARQ.	VER PROJ. ARQ.	VER PROJ. ARQ.	VER PROJ. ARQ.	VER PROJ. ARQ.	VER PROJ. ARQ.

AUTOR: ENG. JOÃO GABRIEL PEREIRA SILVA - CREA: 10216667850

RT DA OBRA:

PROPRIETÁRIO: SECRETARIA DE ESTADO DA EDUCAÇÃO CNPJ: 01.409.705/0001-20
PREPOSTO: SABRINA SILVA VIEIRA VALENTE CPF: 041.530.091-64

ESTRUTURA CONCRETO

TIPO DE PROJETO

DETALHAMENTO DAS VIGAS

ASSUNTO:

DATA: SETEMBRO/2025 ESCALA: INDICADA REVISÃO: 00 Nº PRIORIT: 1020250288273

REV. DATA DESCRIÇÃO VISTO

8/8

FOLHA

AO (118x841)